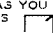


NOTE:
 THE LOT NUMBER IS PLACED IN THE UPPER
 RIGHT HAND CORNER OF LOTS AS YOU FACE
 THE LOT AND IS INDICATED THUS 
 MONUMENT LOTS ARE DENOTED BY A NUMBER
 FOLLOWED BY A LETTER. ALL OTHER LOTS ARE
 REGULAR LOTS.

ALL LOTS ARE 2 GRAVE LOTS EXCEPT
 WHERE OTHERWISE NOTED.
 ALL 2 GRAVE LOTS ARE 6' X 9'
 ALL 3 GRAVE LOTS ARE 9' X 9'

LOT SUMMARY:
 66 2 GRAVE LOTS (FLUSH MARKERS)
 6 3 GRAVE LOTS (FLUSH MARKERS)
 36 2 GRAVE MONUMENT LOTS
 10 3 GRAVE MONUMENT LOTS
 118 TOTAL LOTS

THE FOLLOWING LIST OF LOTS WILL HAVE
 MONUMENT SIZES AS LISTED.
 1409A - 1413A 6 FOOT
 1420A - 1424A 6 FOOT
 1209A - 1213A 6 FOOT
 1220A - 1224A 6 FOOT
 1009A - 1011A 6 FOOT
 1022A - 1024A 6 FOOT
 809A - 813A 6 FOOT
 820A - 824A 6 FOOT
 509A - 513A 4 FOOT
 520A - 524A 4 FOOT

HOLY CROSS CEMETERY

CLEVELAND, OHIO

WEST PART

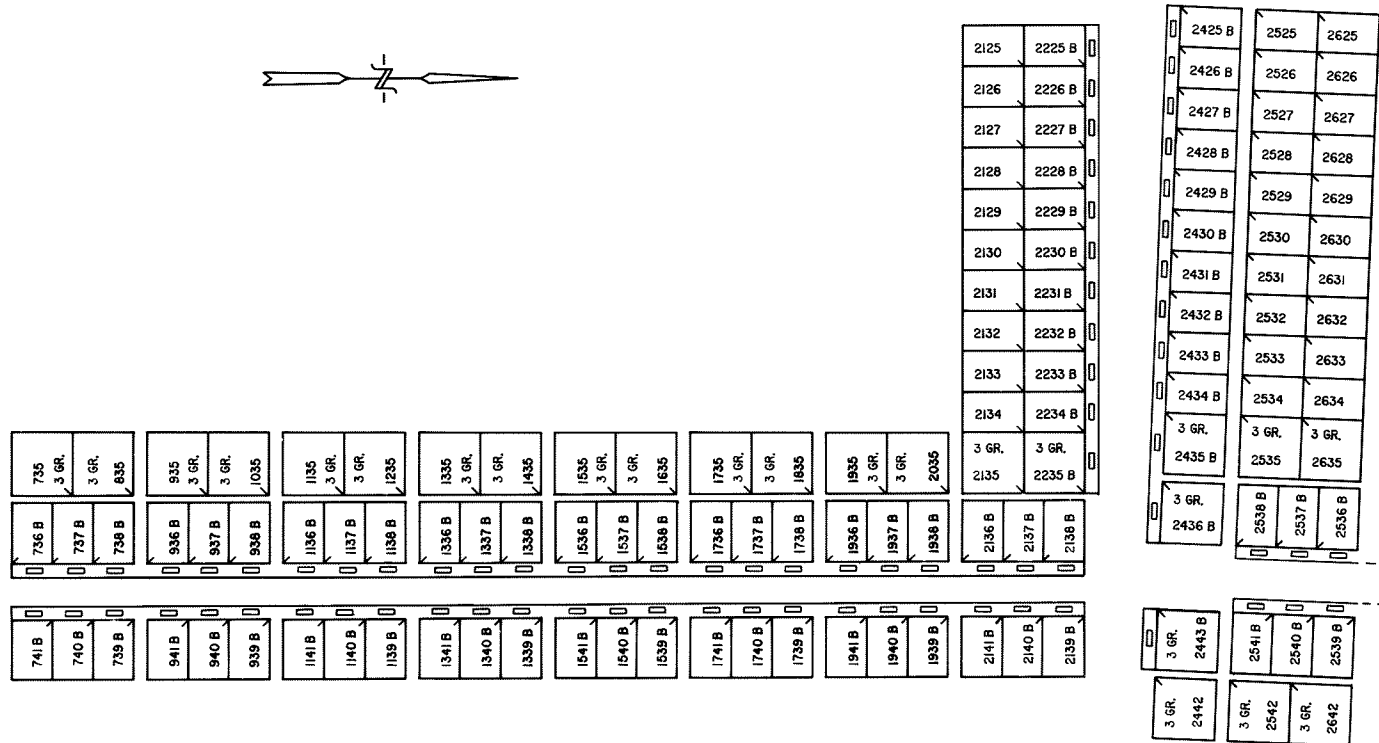
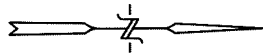
SECTION 30

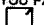
SCALE: 1" = 10'

J.G.

DATE: MAY 24, 1993

DWG. 30-A



NOTE:
 THE LOT NUMBER IS PLACED IN THE UPPER
 RIGHT HAND CORNER OF LOTS AS YOU FACE
 THE LOT AND IS INDICATED THUS 
 MONUMENT LOTS ARE DENOTED BY A NUMBER
 FOLLOWED BY A LETTER. ALL OTHER LOTS ARE
 REGULAR LOTS.

ALL LOTS ARE 2 GRAVE LOTS EXCEPT
 WHERE OTHERWISE NOTED.
 ALL 2 GRAVE LOTS ARE 6' X 9'
 ALL 3 GRAVE LOTS ARE 9' X 9'

LOT SUMMARY:
 30 2 GRAVE LOTS (FLUSH MARKERS)
 20 3 GRAVE LOTS (FLUSH MARKERS)
 68 2 GRAVE MONUMENT LOTS
 7 3 GRAVE MONUMENT LOTS
 138 TOTAL LOTS

THE FOLLOWING LIST OF LOTS WILL HAVE
 MONUMENT SIZES AS LISTED.
 64" - 72" MONUMENTS
 2136B - 2141B; 2235B - 2235B
 2433B - 2436B; 2443B
 2536B - 2541B

54" - 60" MONUMENTS
 1736B - 1741B; 1936B - 1941B
 2230B - 2232B; 2430B - 2432B

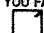
44" - 50" MONUMENTS
 1136B - 1141B; 1336B - 1341B
 1530B - 1541B; 2228B - 2229B
 2428B - 2429B

36" - 42" MONUMENTS
 736B - 741B; 936B - 941B
 2225B - 2227B; 2425B - 2427B

HOLY CROSS CEMETERY
 CLEVELAND, OHIO
WEST PART
SECTION 30

SCALE: 1" = 10' J.G. DATE: OCT. 29, 1993

3674	3673	3672	3671	3670	3669	3668	3667	3666	3665	3664	3663	3662	3661	3660	3659	3658	3657	3656	3655	3654	3653	3652	3651	3650	3649	3648	3647	3646	3645	3644	3643					
3574 C	3573 C	3572 C	3571 C	3570 C	3569 C	3568 C	3567 C	3566 C	3565 C	3564 C	3563 C	3562	3561	3560	3559	3558	3557	3556	3555	3554 C	3553 C	3552 C	3551 C	3550 C	3549 C	3548 C	3547 C	3546 C	3545 C	3544 C	3543 C					
SHRUB BED																	3458	3457	3456	3455	3454	3453	3452	3451	3450	3449	3448	3447	3446	3445	3444	3443				
3274	3273	3272	3271	3270	3269	3268	3267	3266	3265	3264	3263	3262	3261	3260	3259	3258	3257	3256	3255	3254 C	3253 C	3252 C	3251 C	3250 C	3249 C	3248 C	3247 C	3246 C	3245 C	3244 C	3243 C					
3174 C	3173 C	3172 C	3171 C	3170 C	3169 C	3168 C	3167 C	3166 C	3165 C	3164 C	3163 C	3162	3161	3160	3159	3158	3157	3156	3155	3154 C	3153 C	3152 C	3151 C	3150 C	3149 C	3148 C	3147 C	3146 C	3145 C	3144 C	3143 C					
SHRUB BED																	3058	3057	3056	3055	3054	3053	3052	3051	3050	3049	3048	3047	3046	3045	3044	3043				
2974	2973	2972	2971	2970	2969	2968	2967	2966	2965	2964	2963	2962	2961	2960	2959	2958	2957	2956	2955	2954	2953	2952	2951	2950	2949	2948	2947	2946	2945	2944	2943					
SHRUB BED																	2858	2857	2856	2855	2854	2853	2852	2851	2850	2849	2848	2847	2846	2845	2844	2843				
2874	2873	2872	2871	2870	2869	2868	2867	2866	2865	2864	2863	2862	2861	2860	2859	2858	2857	2856	2855	2854	2853	2852	2851	2850	2849	2848	2847	2846	2845	2844	2843					
2674	2673	2672	2671	2670	2669	2668	2667	2666	2665	2664	2663	2662	2661	2660	2659	2658	2657	2656	2655	2654	2653	2652	2651	2650	2649	2648	2647	2646	2645	2644	2643					
2474	2473	2472	2471	2470	2469	2468	2467	2466	2465	2464	2463	2462	2461	2460	2459	2458	2457	2456	2455	2454	2453	2452	2451	2450	2449	2448	2447	2446	2445	2444	2443					
2260	2268	2257																																		

NOTE:
 THE LOT NUMBER IS PLACED IN THE UPPER
 RIGHT HAND CORNER OF LOTS AS YOU FACE
 THE LOT AND IS INDICATED THUS 

MONUMENT LOTS ARE DENOTED BY A NUMBER
 FOLLOWED BY A LETTER. ALL OTHER LOTS ARE
 REGULAR LOTS.

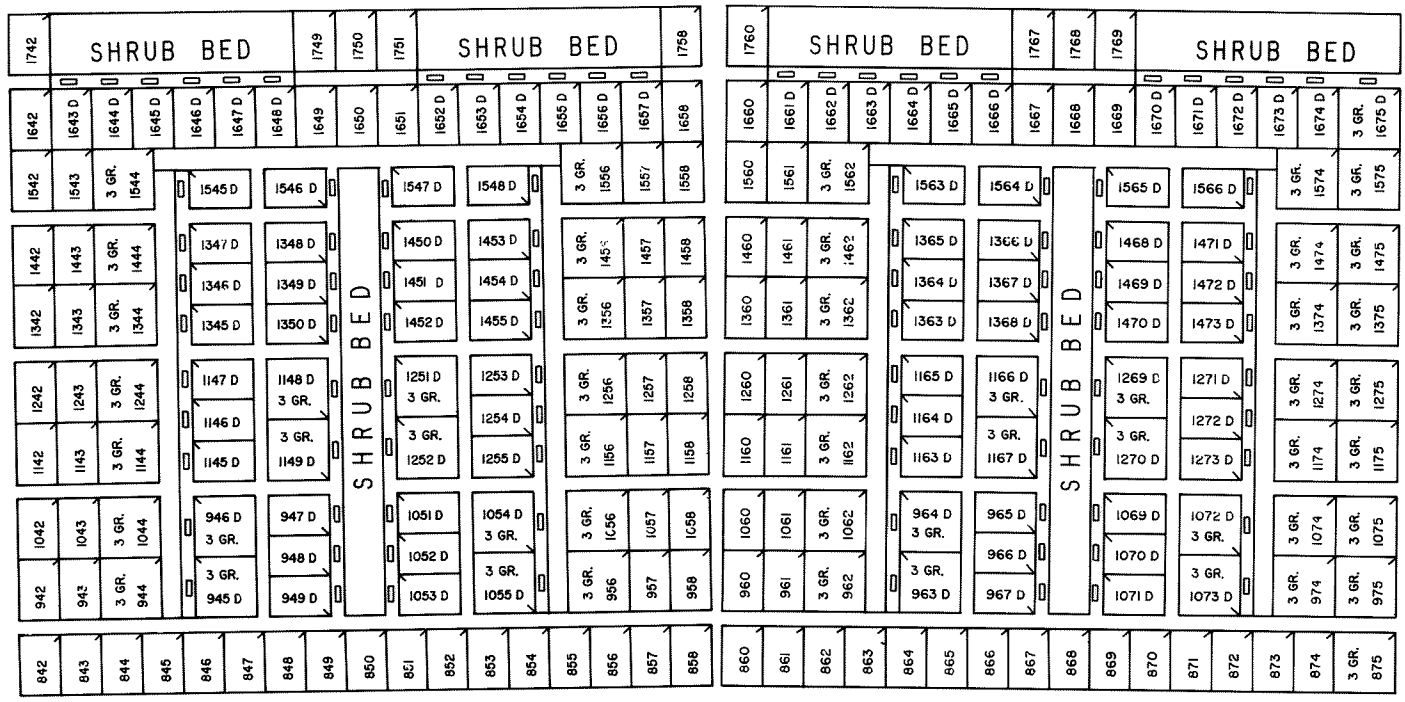
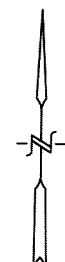
ALL LOTS ARE 2 GRAVE LOTS EXCEPT
 WHERE OTHERWISE NOTED.
 ALL 2 GRAVE LOTS ARE 6' X 8'
 ALL 3 GRAVE LOTS ARE 9' X 9'

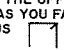
LOT SUMMARY:
 48 2 GRAVE LOTS (FLUSH MARKERS)
 9 3 GRAVE LOTS (FLUSH MARKERS)
 302 2 GRAVE MONUMENT LOTS
 0 3 GRAVE MONUMENT LOTS
 359 TOTAL LOTS

THE FOLLOWING LIST OF LOTS WILL HAVE
 MONUMENT SIZES AS LISTED.
 44" - 50" MONUMENTS
 3143C - 3154C, 3163C - 3174C
 36" - 42" MONUMENTS
 3563C - 3574C, 3543C - 3554C

HOLY CROSS CEMETERY
 CLEVELAND, OHIO
 CENTRAL PART
 SECTION 30

SCALE: 1" = 10' J.G. DATE: MAY 24, 1993



NOTE:
 THE LOT NUMBER IS PLACED IN THE UPPER
 RIGHT HAND CORNER OF LOTS AS YOU FACE
 THE LOT AND IS INDICATED THUS 

MONUMENT LOTS ARE DENOTED BY A NUMBER
 FOLLOWED BY A LETTER. ALL OTHER LOTS ARE
 REGULAR LOTS.

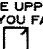
ALL LOTS ARE 2 GRAVE LOTS EXCEPT
 WHERE OTHERWISE NOTED.
 ALL 2 GRAVE LOTS ARE 6' X 9'
 ALL 3 GRAVE LOTS ARE 9' X 9'

LOT SUMMARY:
 92 2 GRAVE LOTS (FLUSH MARKERS)
 36 3 GRAVE LOTS (FLUSH MARKERS)
 79 2 GRAVE MONUMENT LOTS
 17 3 GRAVE MONUMENT LOTS
 224 TOTAL LOTS

THE FOLLOWING LIST OF LOTS WILL HAVE
 MONUMENT SIZES AS LISTED.
 54" - 60" MONUMENTS
 1643D - 1648D; 1652D - 1657D
 1661D - 1666D; 1670D - 1675D

36" - 42" MONUMENTS	44" - 50" MONUMENTS
945D - 946D; 963D - 964D	947D - 949D; 965D - 967D
1055D - 1054D; 1072D - 1073D	1051D - 1053D; 1069D - 1071D
1145D - 1147D; 1163D - 1165D	1148D - 1149D; 1168D - 1167D
1253D - 1255D; 1271D - 1273D	1251D - 1252D; 1269D - 1270D
1345D - 1347D; 1363D - 1365D	1348D - 1350D; 1366D - 1368D
1453D - 1455D; 1471D - 1473D	1450D - 1452D; 1468D - 1470D
1545D - 1548D; 1563D - 1566D	1546D - 1547D; 1564D - 1565D

HOLY CROSS CEMETERY
 CLEVELAND, OHIO
 CENTRAL PART
 SECTION 30
 SCALE: 1" = 10' J.G. DATE: OCT. 27, 1993

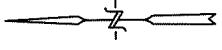
NOTE:
 THE LOT NUMBER IS PLACED IN THE UPPER
 RIGHT HAND CORNER OF LOTS, AS YOU FACE
 THE LOT AND IS INDICATED THUS 

MONUMENT LOTS ARE DENOTED BY A NUMBER
 FOLLOWED BY A LETTER. ALL OTHER LOTS ARE
 REGULAR LOTS.

ALL LOTS ARE 2 GRAVE LOTS EXCEPT
 WHERE OTHERWISE NOTED.
 ALL 2 GRAVE LOTS ARE 6' X 9'
 ALL 3 GRAVE LOTS ARE 9' X 9'

LOT SUMMARY:
 37 2 GRAVE LOTS (FLUSH MARKERS)
 37 3 GRAVE LOTS (FLUSH MARKERS)
 51 2 GRAVE MONUMENT LOTS
 7 3 GRAVE MONUMENT LOTS
 132 TOTAL LOTS

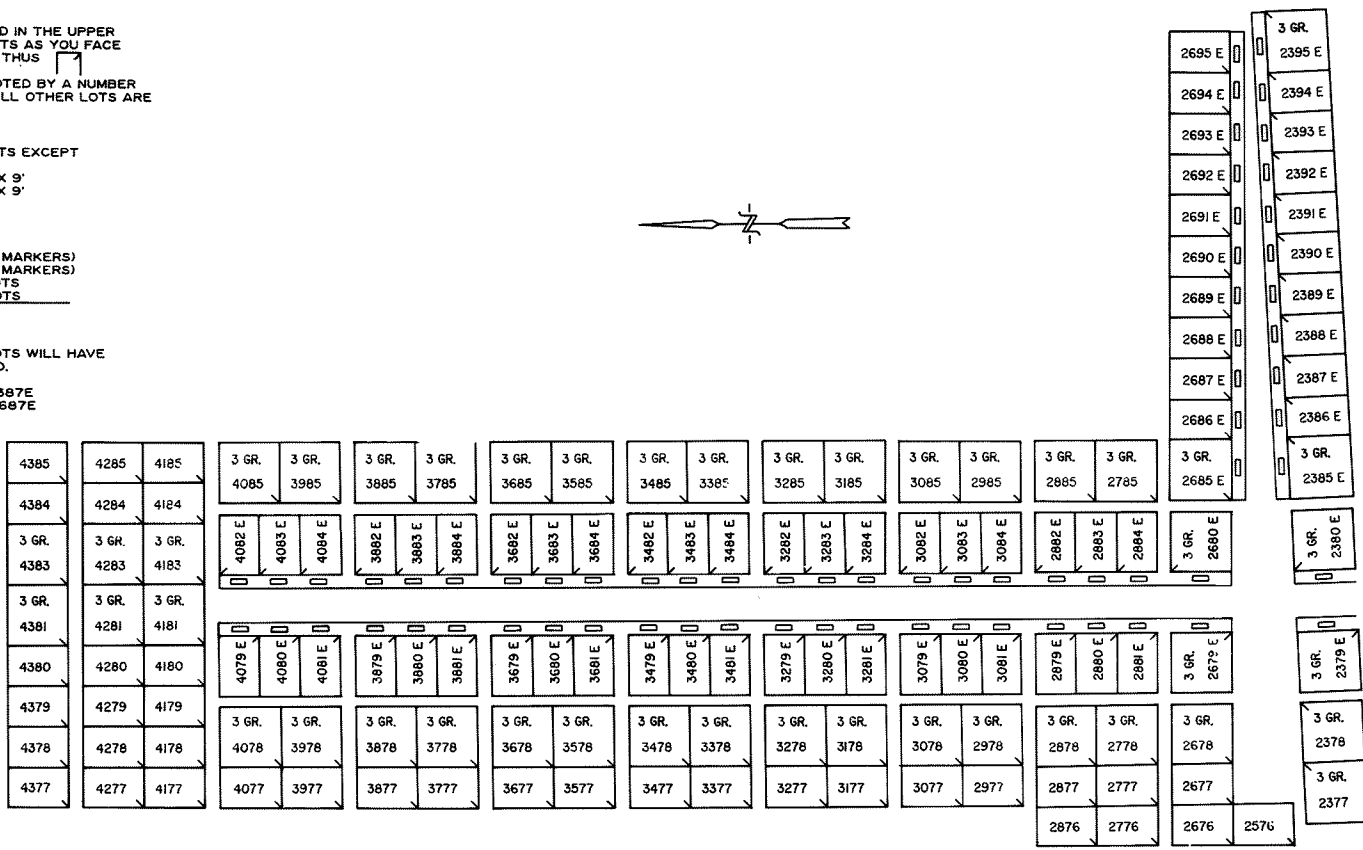
THE FOLLOWING LIST OF LOTS WILL HAVE
 MONUMENT SIZES AS LISTED.
 64" - 72" MONUMENTS
 2379E - 2380E; 2385E - 2387E
 2679E - 2680E; 2685E - 2687E



54" - 60" MONUMENTS
 2388E - 2390E; 2688E - 2690E
 2879E - 2884E; 3079E - 3084E


44" - 50" MONUMENTS
 3279E - 3284E; 3479E - 3484E
 3679E - 3684E

36" - 42" MONUMENTS
 3879E - 3884E; 4079E - 4084E



HOLY CROSS CEMETERY
 CLEVELAND, OHIO
 EAST PART
 SECTION 30

SCALE: 1" = 10' J.G. DATE: OCT. 29, 1993

NOTE:
THE LOT NUMBER IS PLACED IN THE UPPER
RIGHT HAND CORNER OF LOTS AS YOU FACE
THE LOT AND IS INDICATED THUS 

MONUMENT LOTS ARE DENOTED BY A NUMBER
FOLLOWED BY A LETTER. ALL OTHER LOTS ARE
REGULAR LOTS.

ALL LOTS ARE 2 GRAVE LOTS EXCEPT
WHERE OTHERWISE NOTED.
ALL 2 GRAVE LOTS ARE 6' X 9'
ALL 3 GRAVE LOTS ARE 9' X 9'

LOT SUMMARY:
31 2 GRAVE LOTS (FLUSH MARKERS)
55 3 GRAVE LOTS (FLUSH MARKERS)
73 2 GRAVE MONUMENT LOTS
7 3 GRAVE MONUMENT LOTS

166 TOTAL LOTS

THE FOLLOWING LIST OF LOTS WILL HAVE
MONUMENT SIZES AS LISTED.

64" - 72" MONUMENTS

1979E - 1984E; 2179E - 2184E
2379E - 2380E; 2385E - 2387E
2679E - 2680E; 2685E - 2687E

54" - 60" MONUMENTS

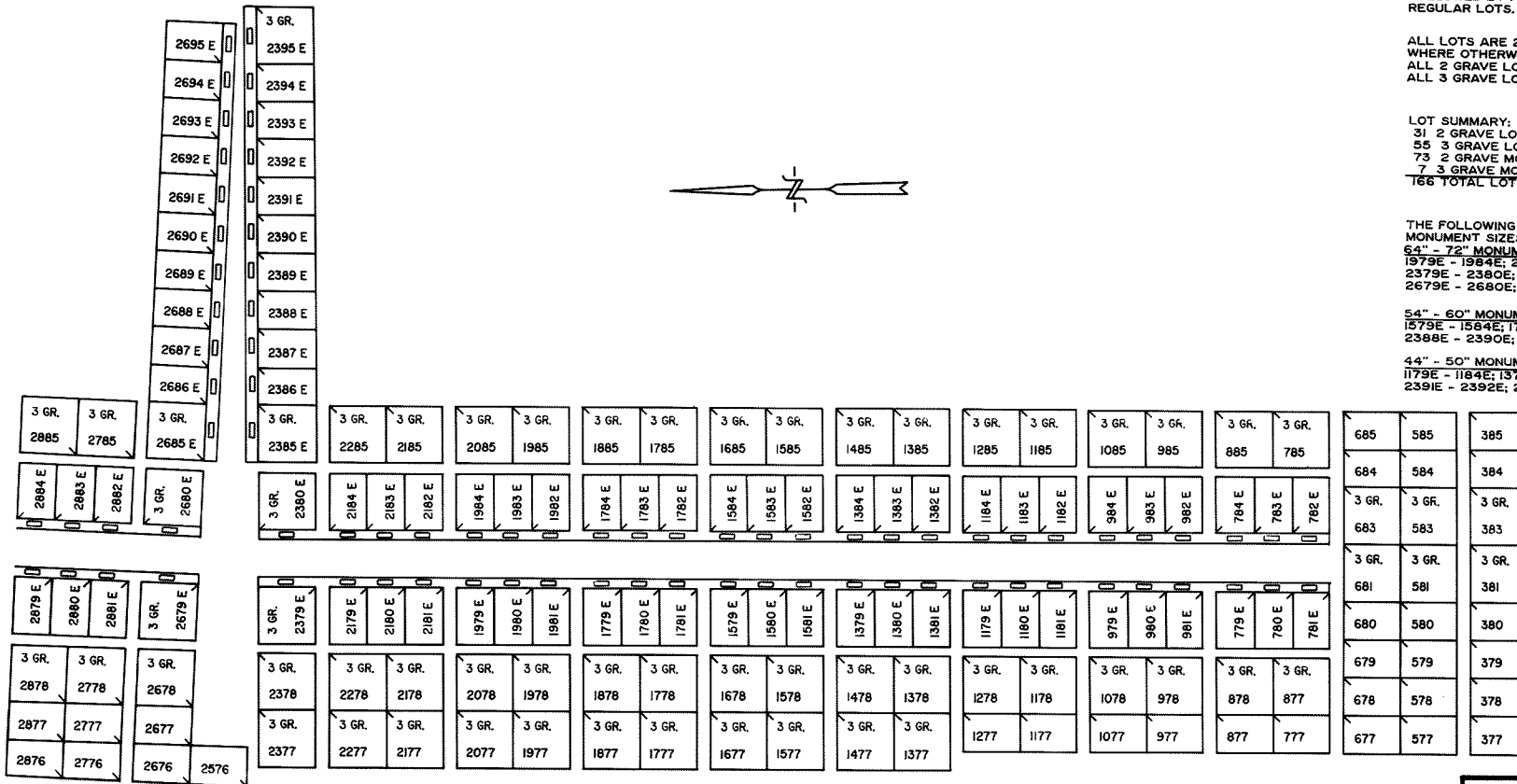
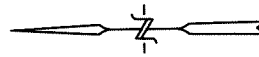
1579E - 1584E; 1779E - 1784E
2388E - 2390E; 2688E - 2690E

44" - 50" MONUMENTS

1179E - 1184E; 1379E - 1384E
2391E - 2392E; 2691E - 2692E

36" - 42" MONUMENTS

779E - 784E; 979E - 984E
2393E - 2395E; 2693E - 2695E



HOLY CROSS CEMETERY

CLEVELAND, OHIO

**EAST PART
SECTION 30**

SCALE: 1" = 10' J.G. DATE: OCT. 29, 1993